



VOLUME 3
ISSUE 1

SPRING 2010
NEWSLETTER

GET TO KNOW HCBH'S NEWEST EMPLOYEES

**Nick Baird,
Accounting
Manager**



Nick graduated from Evanston High School and served a two year mission in Argentina. Upon his return he made the decision to go to Western Wyoming Community College. On May 24, 2002 he married Audrey Micheli. Nick and Audrey both continued their education at the University of Wyoming. Nick graduated from UW obtaining a Bachelor's of Science in Accounting with a double emphasis in Spanish and Banking and Financial Services.

After graduation Nick accepted a job with a small company located just outside of Evanston. On his 90th day with the small company he had cleaned up the accounting records and the company informed him that his services were no longer needed which was very nerve-racking. So Nick called the three banks that had offered him a job as he was preparing to graduate and one of them offered him a job if he was willing to relocate to Afton. Nick and Audrey moved with their two children to Star Valley and enjoyed the beautiful area for about fourteen months where his third child was born. After that he decided they probably needed to relocate to Kemmerer because of the proximity to Audrey's family. Nick applied for a transfer with the bank he was working with and when it was approved they moved to Kemmerer.

In September of 2009 Nick and his wife decided a career change at the time was appropriate and the opportunity to assist HCBH as their accounting

**Leah Black,
Therapist
Afton Office**

Leah Black joined the High Country team in August 2009. Leah received a Bachelor of Arts degree in Psychology and Communication from Denison University in Ohio. She also has a Masters degree in Social Work from Portland State University in Ohio.

Prior to moving to Star Valley last year, Leah had been working for Children and Family Services in Washington State. She has also worked with adolescents in a residential treatment center, worked as a parent trainer, and assisted disabled clients while working at the Oregon Commission for the Blind.

Leah enjoys working with a wide variety of clients. Her areas of practice include, but are not limited to, marital counseling, working with adolescents, and working with individuals struggling with depression, anxiety, and many other mental health issues. She is available to see clients at Star Valley High School, HCBH Alpine office, or the HCBH office in Afton.

Inside this issue:

New Employees **2**

New Employees **3**
(continued)

Substance Abuse **4**
Youth Group

GET TO KNOW HCBH'S NEWEST EMPLOYEES

Continued...

**Dayle Read-Hudson,
Therapist
Pinedale Office**



Dayle is the Clinical Director for the Pine Creek Behavioral Health office (a division of HCBH) in Pinedale. She began working at PCBH with the merging of her company Pine Creek Family Counseling and HCBH in September 2009.

Dayle provides individual, couples, adolescent, substance abuse, and many other mental health and substance abuse services. As the PCBH Clinical Director, Dayle spends a lot of time in the community and working with other state and local agencies.

Dayle enjoys spending time with her family and working with the people of Pinedale.

**Sarah Hixson,
Therapist
Pinedale Office**

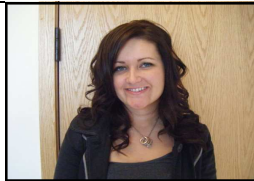


Sarah R. Hixson was born in Bethel Connecticut and grew up loving the outdoors and the big city.

Sarah stumbled into the West 17 years ago for a job at the small counseling center in Pinedale. She planned to give the place at least two years, but feels she has grown addicted to sunshine and fresh air because she is still here.

Sarah loves working with people and she can readily express her appreciation to all the clients over the last 16 and a half years who have “basically taught me everything I know about assisting people with their life transitions.”

**Ashley Prescott,
Intern Therapist
Pinedale Office**



Ashley came to HCBH with the merging of Pine Creek Family Counseling and HCBH in September 2009. She is currently available to see adolescents and adults for individual counseling as well as family counseling. Ashley started the Sublette County affiliate of the National Alliance of Mental Illness in April of 2009 and is currently the Vice President of the local branch. Ashley spends her spare time riding horses, hiking and cross-country skiing.

**Katherine Ryan,
Therapist
Pinedale Office**

Kay is the addictions therapist for the men’s, women’s, and adolescent’s intensive outpatient, outpatient, and education treatment programs. Kay is primarily responsible for group therapy, individual therapy, and evaluations. Kay specializes in adult and adolescent addiction therapy and prevention. Other responsibilities include community outreach and community prevention. She received her Master’s Degree in Clinical Psychology and Substance Abuse Counseling from Northwestern State University of Louisiana and her Bachelor of Arts, Psychology from Tulane University.

**Pat Johnson,
Office Assistant
Pinedale Office**

Pat began her work with HCBH in September of 2009 with the merge of Pine Creek Family Counseling and High Country Behavioral Health. Pat is currently the office assistant at the Pine Creek Behavioral Health office in Pinedale. She enjoys spending time with her husband and their kids and grandkids.

GET TO KNOW HCBH'S NEWEST EMPLOYEES

Continued...

**Brent Westover,
Therapist
Kemmerer Office**



Brent received his Masters of Marriage and Family Therapy at Kansas State University. Brent joined the HCBH team in January of 2010. Much of Brent's experience has been working with issues such as mental health, communication, affairs, domestic violence, sexual disorders, pornography addictions, family and relational functioning. He has also worked with community corrections, dealing with substance abuse, sex offenses, and anger management. Brent hopes to use these experiences in contributing to his work at HCBH with couples, families, individuals and groups.

**Todd Bader,
Therapist
Kemmerer Office**



Todd has been a counselor for over a decade and enjoys listening and helping people with their problems no matter how big or small they may seem. He has worked successfully with people struggling with addiction, depression, anxiety, mental illness, parenting issues, step parenting, and helping children and teens with the issues that occur in their lives. He is a Licensed Professional Counselor in the states of Wyoming and Utah and he has a Master's Degree from the University of Northern Colorado in Counseling Psychology. He is a member of the National Board of Certified Counselors and he is honored to help people in a meaningful, professional, and personal manner.

**Elizabeth Slaughter
Office Assistant
Kemmerer Office**

Liz is a Wyoming native. Her family ranch was in Boulder. Liz is a PHS and UW alumni. Her family includes three adult professionals, two daughters and one son. Her son is an associate professor (Ph.D.) in Microbiology, An Sci Department, at Laramie. Liz's youngest daughter is in her first year of a master's program in Psychology and Criminal Justice en route to her Ph.D. and lives in San Antonio. Her eldest daughter is a writer and is pursuing her love of cooking at culinary school. Liz's husband is a career coal miner. They enjoy travel, the outdoors and life in general. Liz joined HCBH on November 1, 2009 and enjoys working with everyone in Kemmerer.



**Linda Brown
Office Assistant
Afton Office**

Linda began working at the Afton HCBH office in September of 2009 and oversees the billing. Linda is a long time resident of Lincoln County. She works closely with her husband in their business as well as with their cattle. Linda loves to spend time outdoors and with her kids and grandkids.

NEW SUBSTANCE ABUSE GROUP FOR YOUTH TO BEGIN AT HCBH

High Country Behavioral Health is pleased to announce a new treatment program: Criminal Conduct and Substance Abuse Treatment for Adolescents: Pathways for Self-Discovery and Change.

This is an intensive outpatient treatment program for adolescents involved with drug and alcohol use and/or behavioral problems. The program focus and curriculum is designed to help adolescents abstain from drugs and alcohol, identify and correct thinking errors, develop healthy coping skills, and establish healthy relationship boundaries.

For cost, enrollment or any other questions please call the Afton Office. Thank you and we look forward to continuing to serve the Star Valley Community.

ADOLESCENT SUBSTANCE ABUSE GROUP SCHEDULE HELD AT HCBH-389 ADAMS STREET, AFTON, WYOMING

Monday-4:00-5:15-Therapist: Andrew Parker
 Tuesday-4:00-5:15-Therapist: Gabrielle Fritze
 Wednesday-4:00-5:15-Therapist: Leah Black
 Thursday-3:45-5:00-Therapist: Clive Hallam

High Country Behavioral Health Directory

Afton Office	Kemmerer Office	Pinedale Office
389 Adams, PO Box 376	821 Sage Avenue	24 Country Club, PO Box 856
Afton, WY 83110	Kemmerer, WY 83101	Pinedale, WY 82941
(307) 885-9883	(307) 877-4466	(307) 367-2111
<u>Clinic Director/Therapist</u>	<u>Clinic Director/Therapist</u>	<u>Clinic Director/Therapist</u>
Clive Hallam	Scott Erickson	Dayle Read-Hudson
<u>Therapists</u>	<u>Therapists</u>	<u>Therapists</u>
Andrew Parker	Dinah Villanueva	Maiké Tan
Gabrielle Fritze	Todd Bader	Sarah Hixson
Leah Black	Brent Westover	Kay Ryan
<u>Office Manager</u>	<u>Office Manager</u>	<u>Office Manager</u>
Kelly Romine	Carolyn Carlson	Allison, Interim
<u>Assistant Office Manager:</u>	<u>Assistant Office Manager</u>	<u>Assistant Office Managers</u>
Linda Brown	Elizabeth Slaughter	Marty Salvesen, Pat Johnson
<u>Prevention Specialist</u>	<u>Prevention Coordinator</u>	<u>Prevention Specialists</u>
Alesia Winters	Brittany Ritter	Robena Downie
	<u>Prevention Specialist</u>	Benita Gustafson
	Keith Mathews	
<u>Executive Director:</u> Steve Corsi	<u>Operations Manager:</u> Carl Harris	
<u>Business Manager:</u> Ann Sanderson	<u>Accounting Manager:</u> Nick Baird	